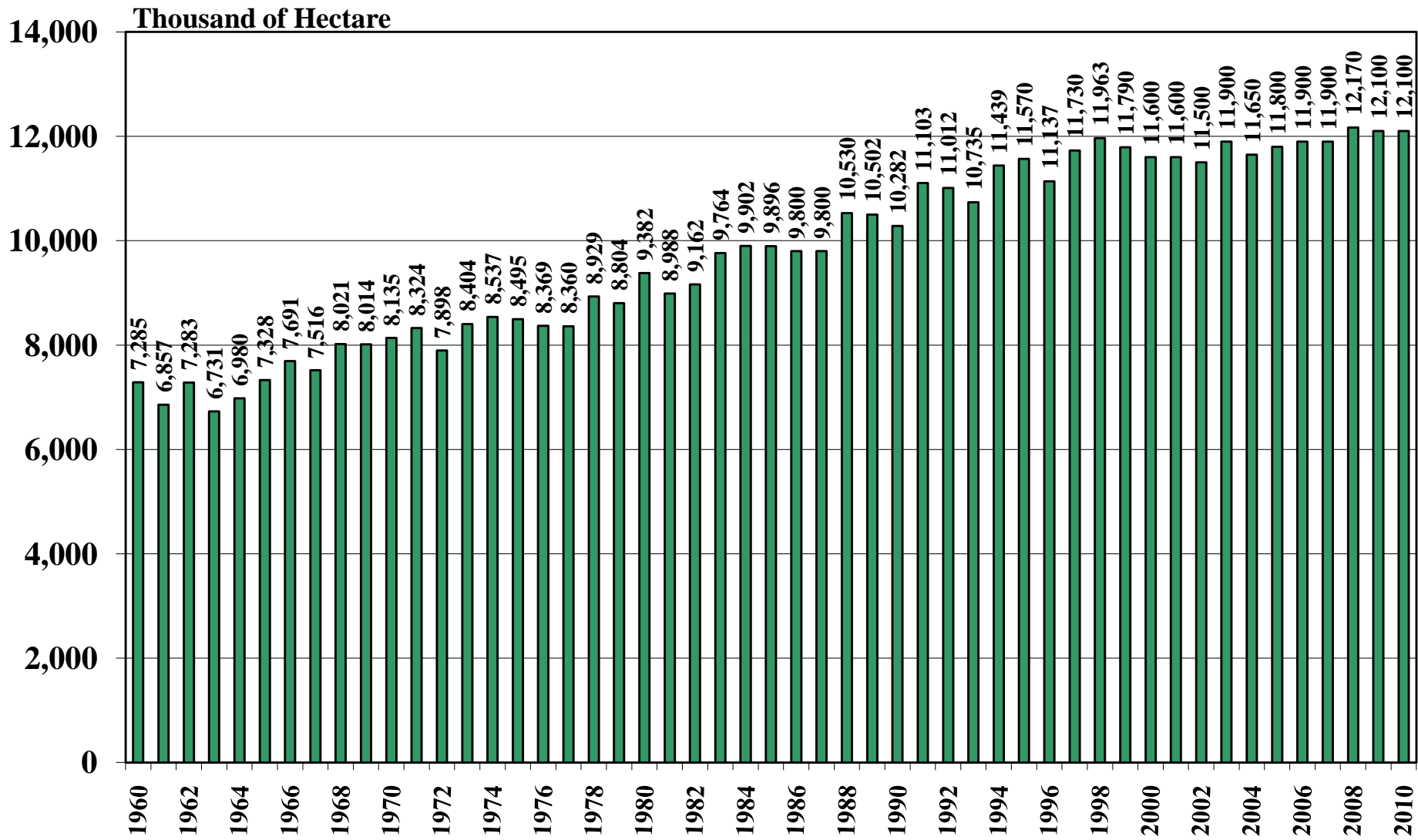


Indonesia

USDA Supply and Demand Estimates

October 29, 2010

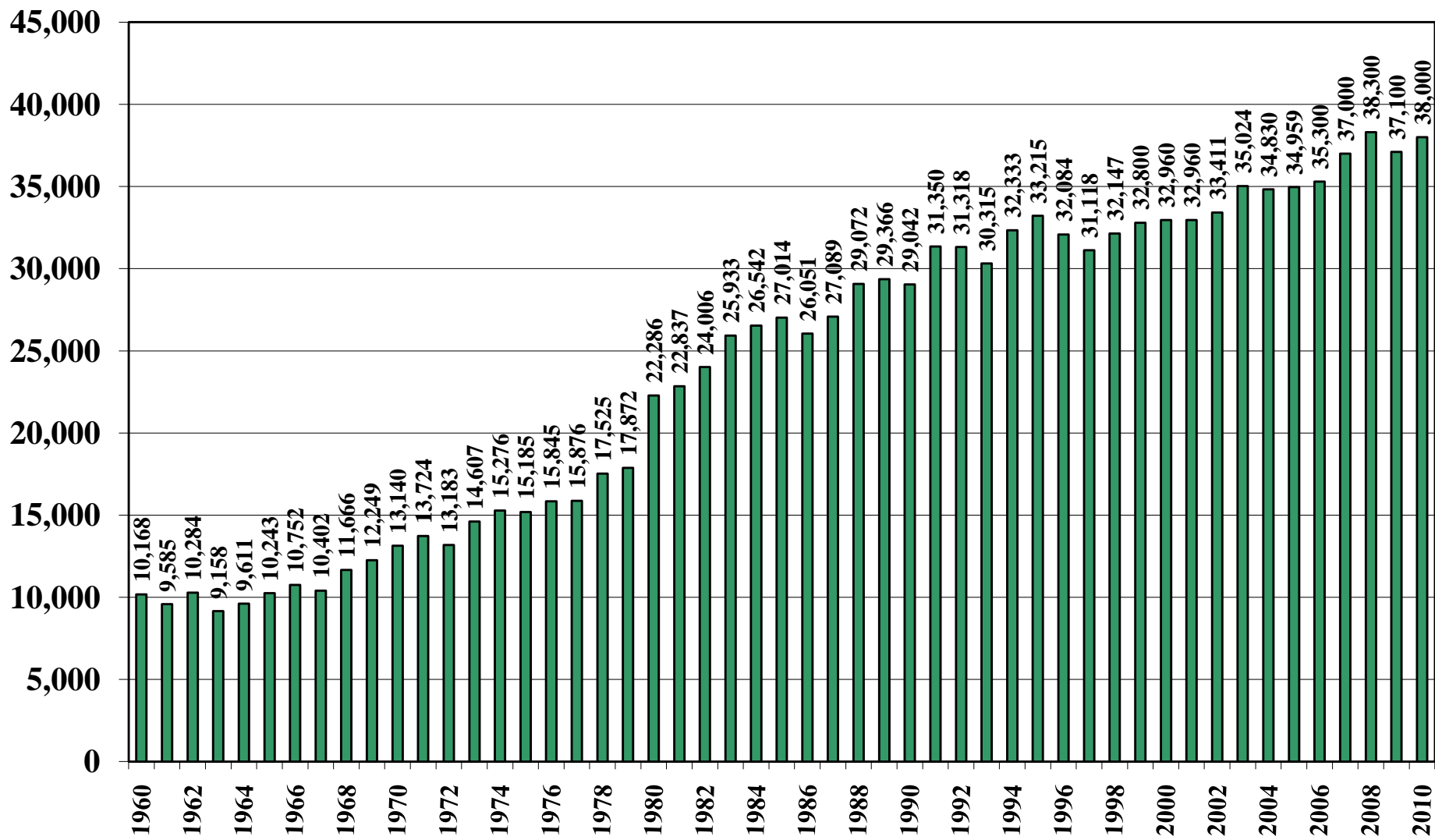
Indonesia Rice Acreage Harvested 1960/61 – 2010/11



Source: [USDA Foreign Agricultural Service](#)

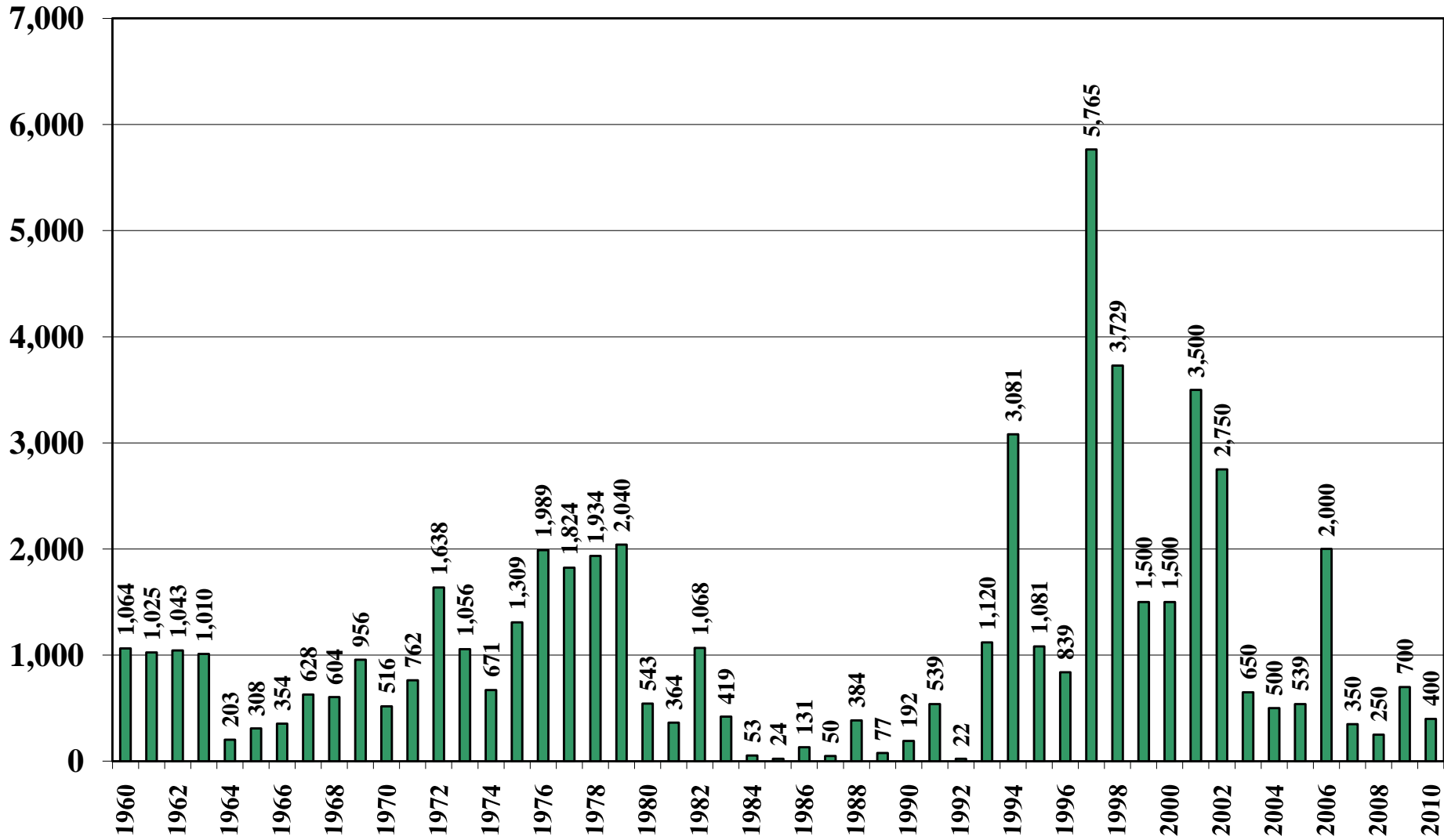
October 29, 2010

Indonesia Milled Production (1,000 Metric Tons) 1960/61 – 2010/11



Source: [USDA Foreign Agricultural Service](#)

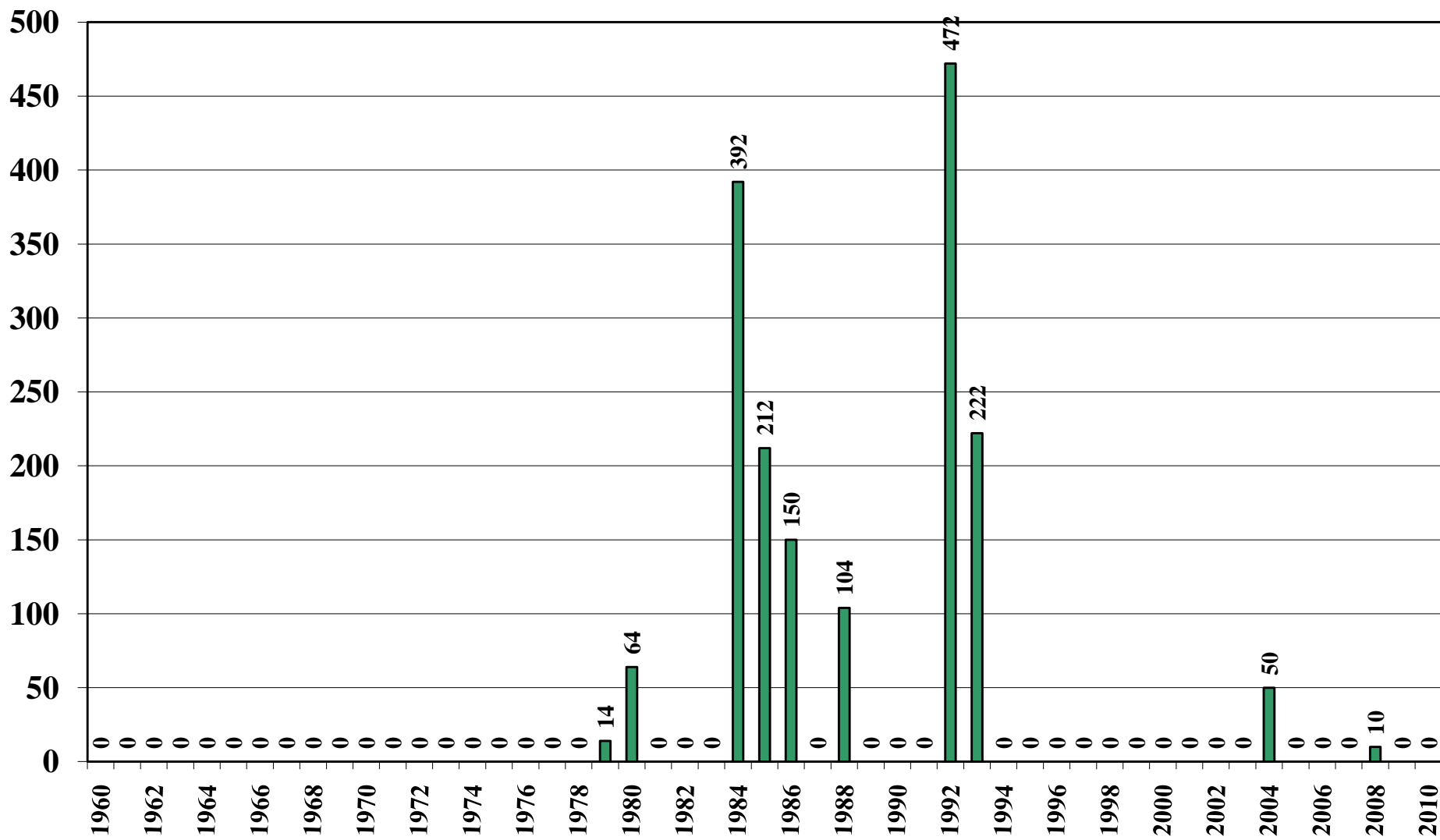
Indonesia Rice Jan-Dec Imports (1,000 Metric Tons) 1960/61 – 2010/11



Source: [USDA Foreign Agricultural Service](#)

October 29, 2010

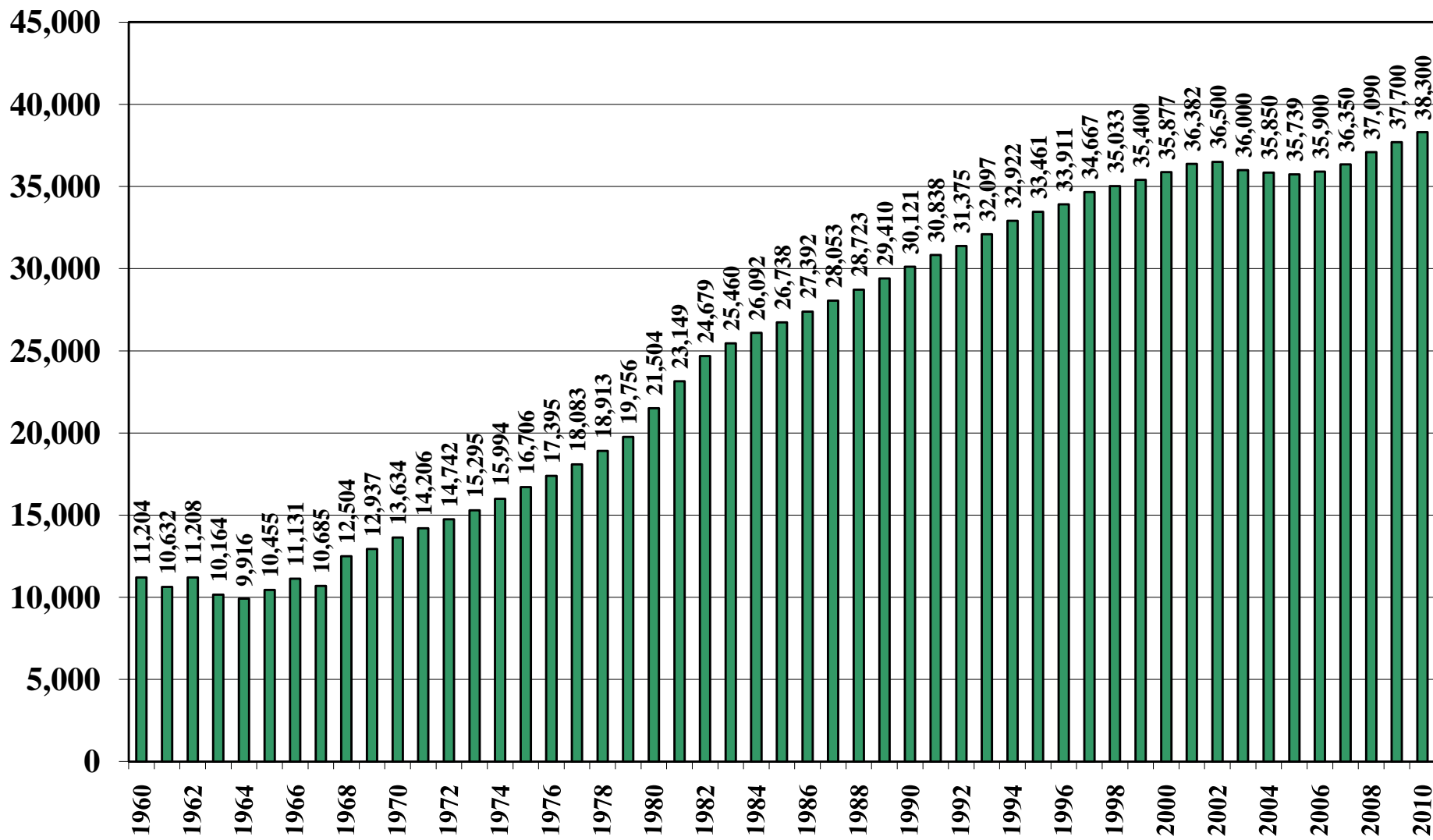
Indonesia Rice Jan-Dec Exports (1,000 Metric Tons) 1960/61 – 2010/11



Source: [USDA Foreign Agricultural Service](#)

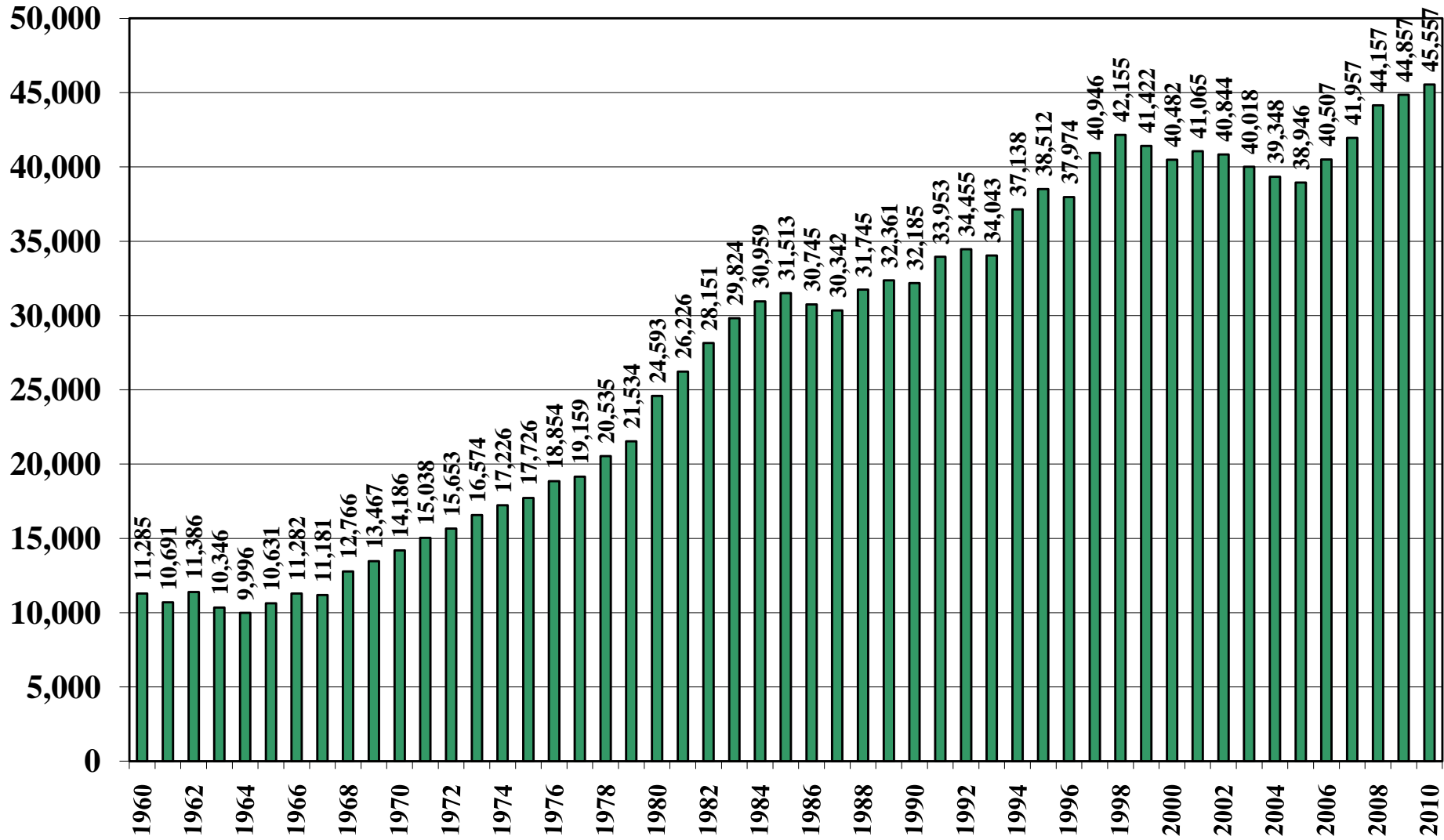
October 29, 2010

Indonesia Rice Total Domestic Consumption (1,000 Metric Tons) 1960/61 – 2010/11



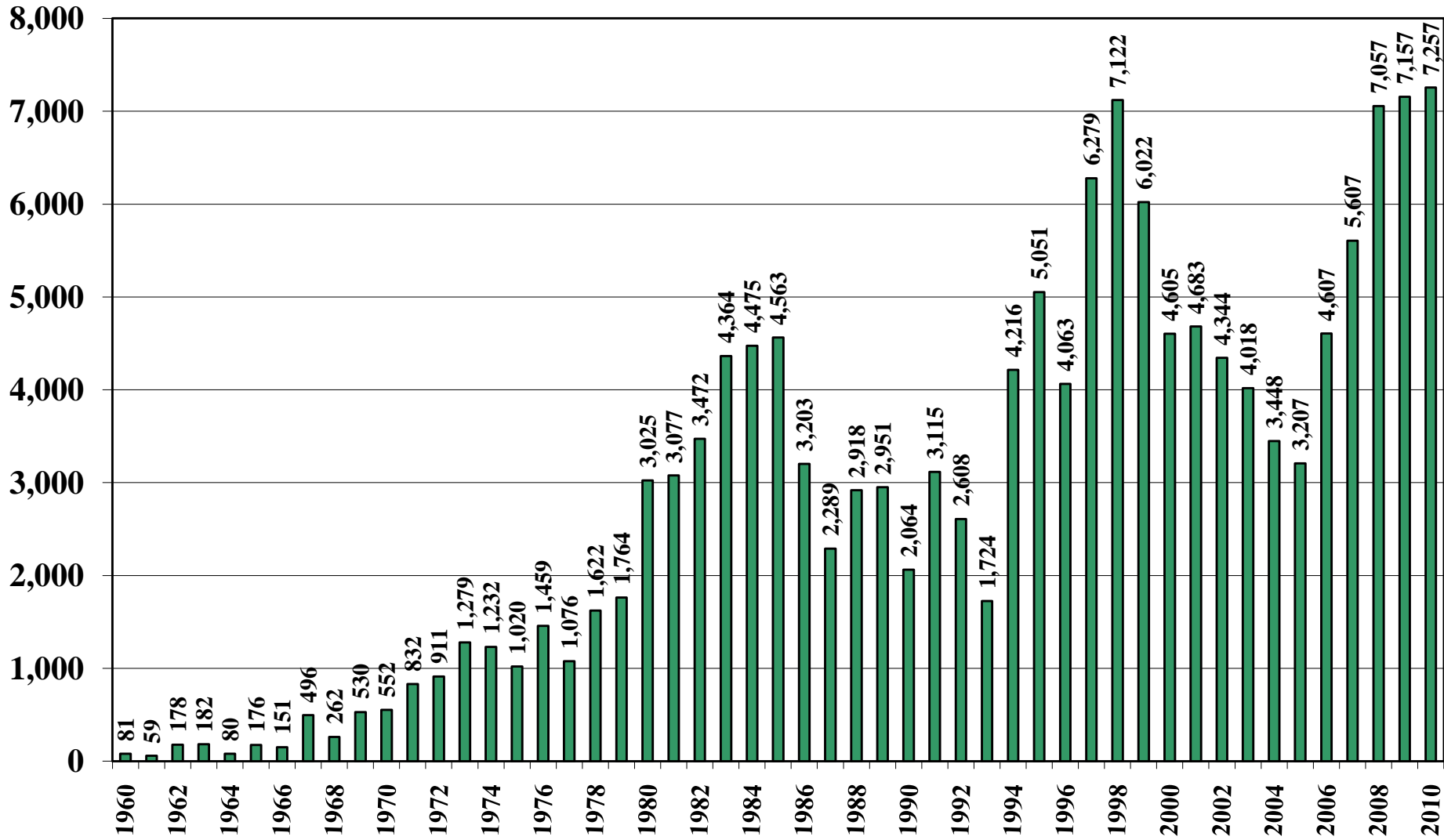
Source: [USDA Foreign Agricultural Service](#)

Indonesia Rice Total Distribution (1,000 Metric Tons) 1960/61 – 2010/11



Source: [USDA Foreign Agricultural Service](#)

Indonesia Rice Ending Stocks (1,000 Metric Tons) 1960/61 – 2010/11



Source: [USDA Foreign Agricultural Service](#)

October 29, 2010