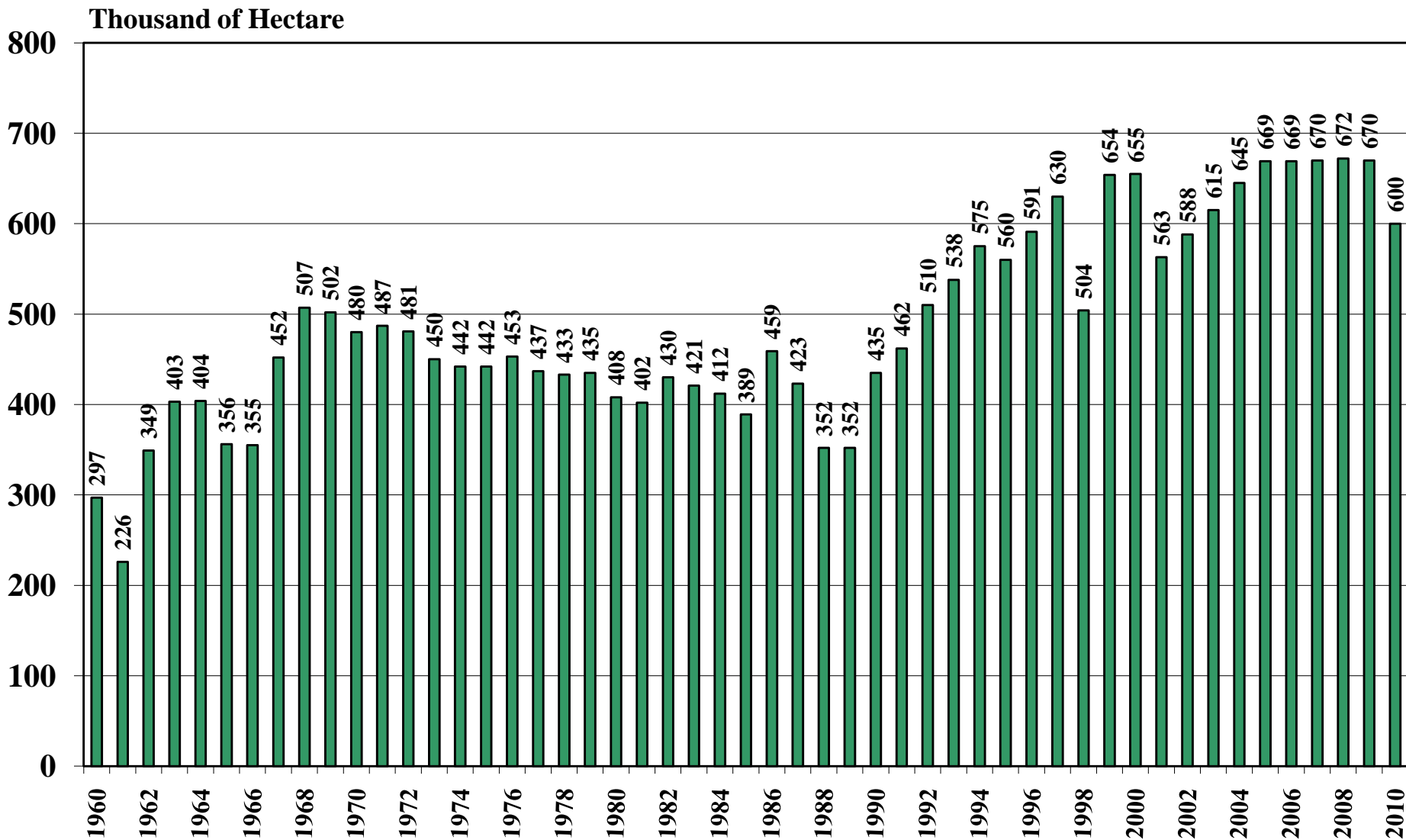


**Egypt**

**USDA Supply and Demand Estimates**

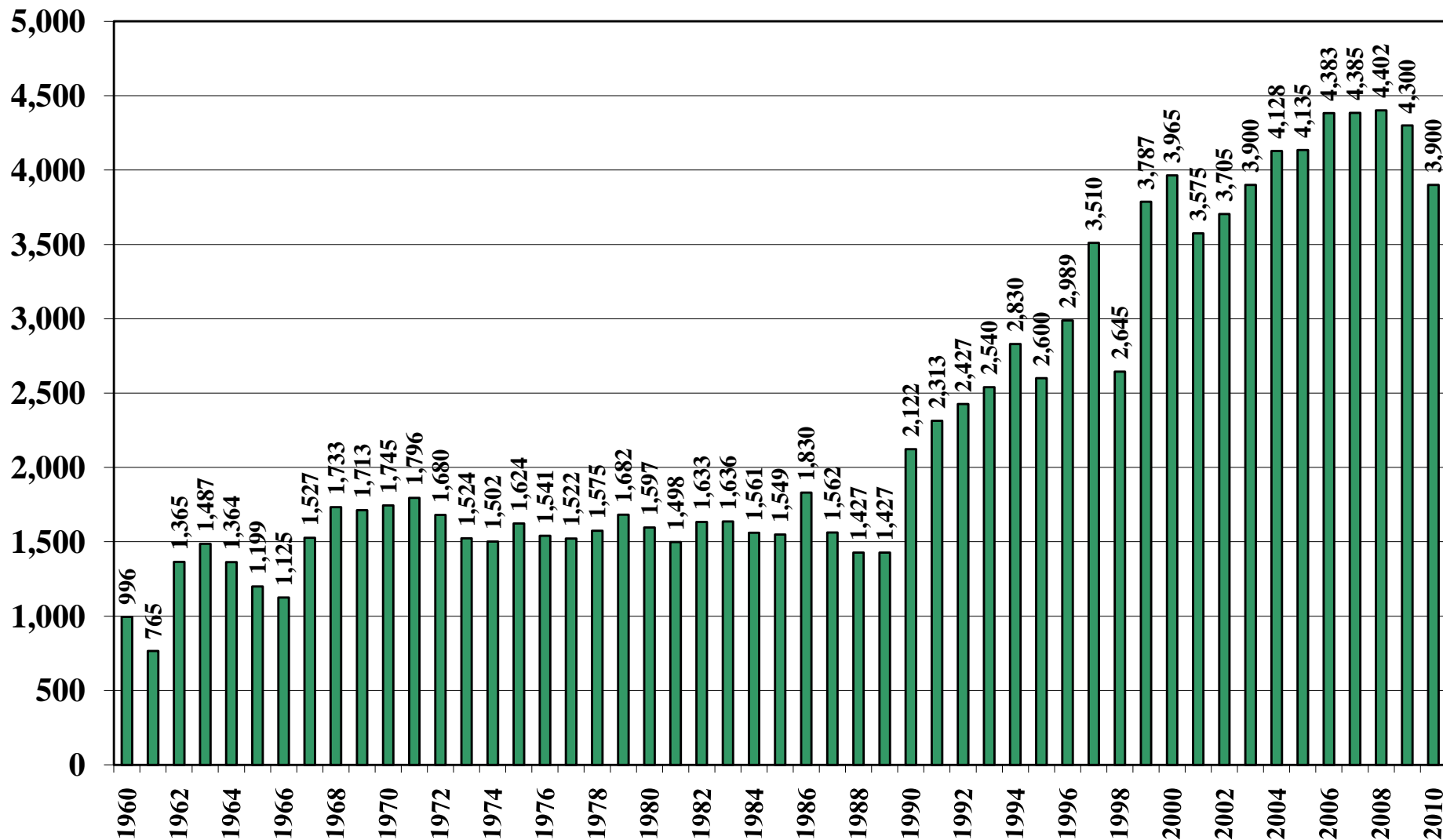
**October 20, 2010**

# Egypt Rice Acreage Harvested 1960/61 – 2010/11



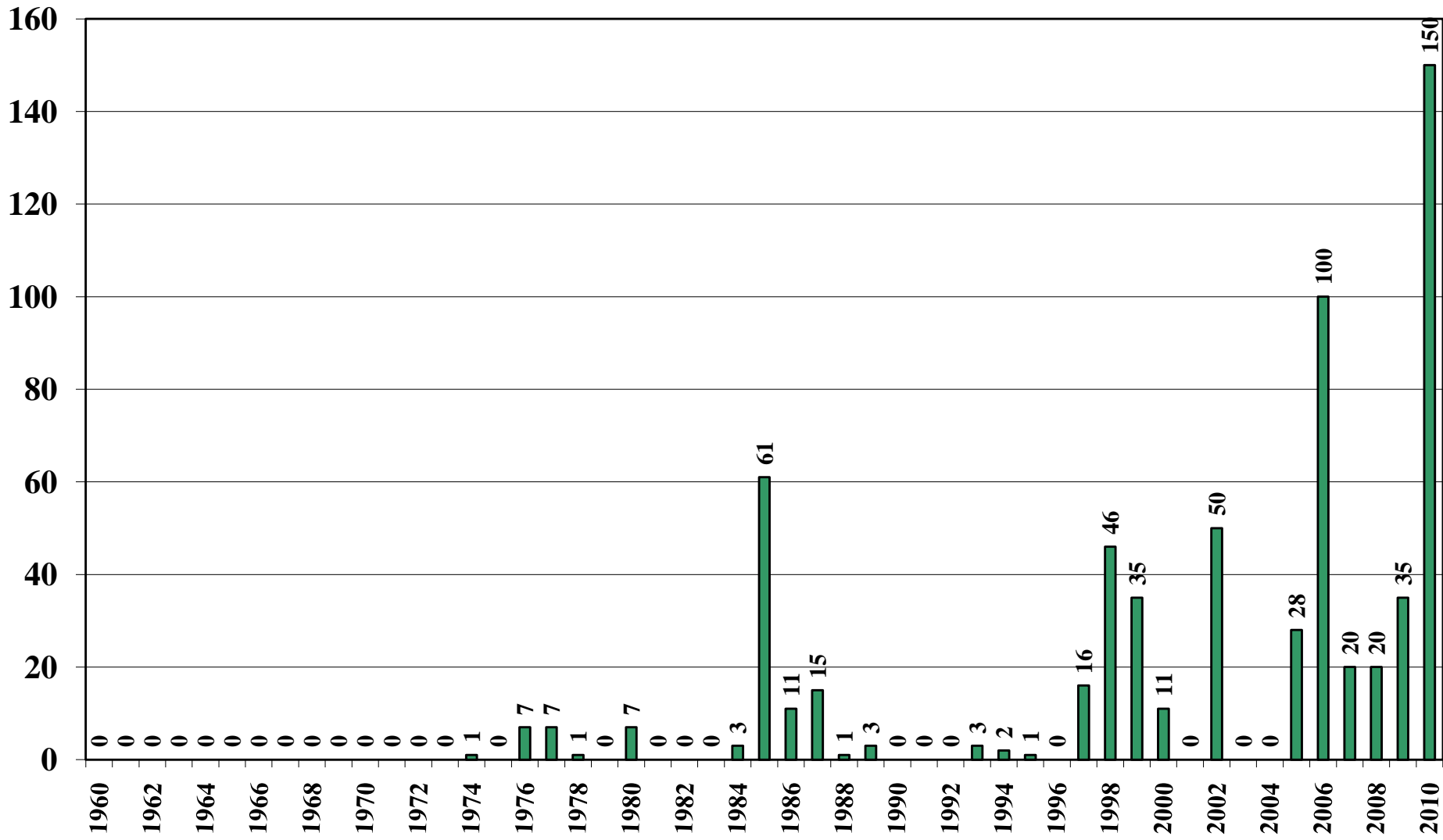
Source: [USDA Foreign Agricultural Service](#)

# Egypt Rice Milled Production (1,000 Metric Tons) 1960/61 – 2010/11



Source: [USDA Foreign Agricultural Service](#)

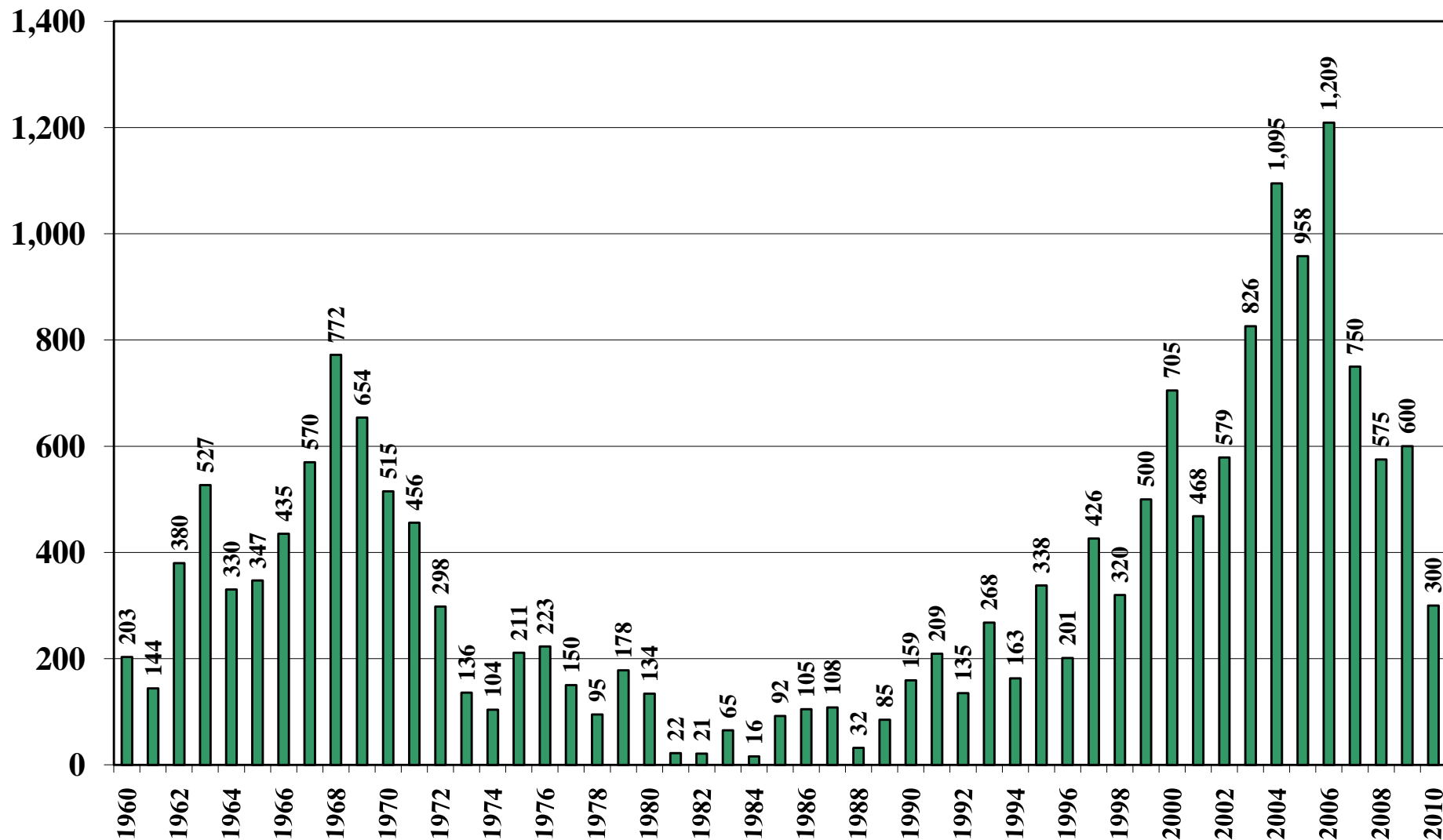
# Egypt Rice Jan-Dec Imports (1,000 Metric Tons) 1960/61 – 2010/11



Source: [USDA Foreign Agricultural Service](#)

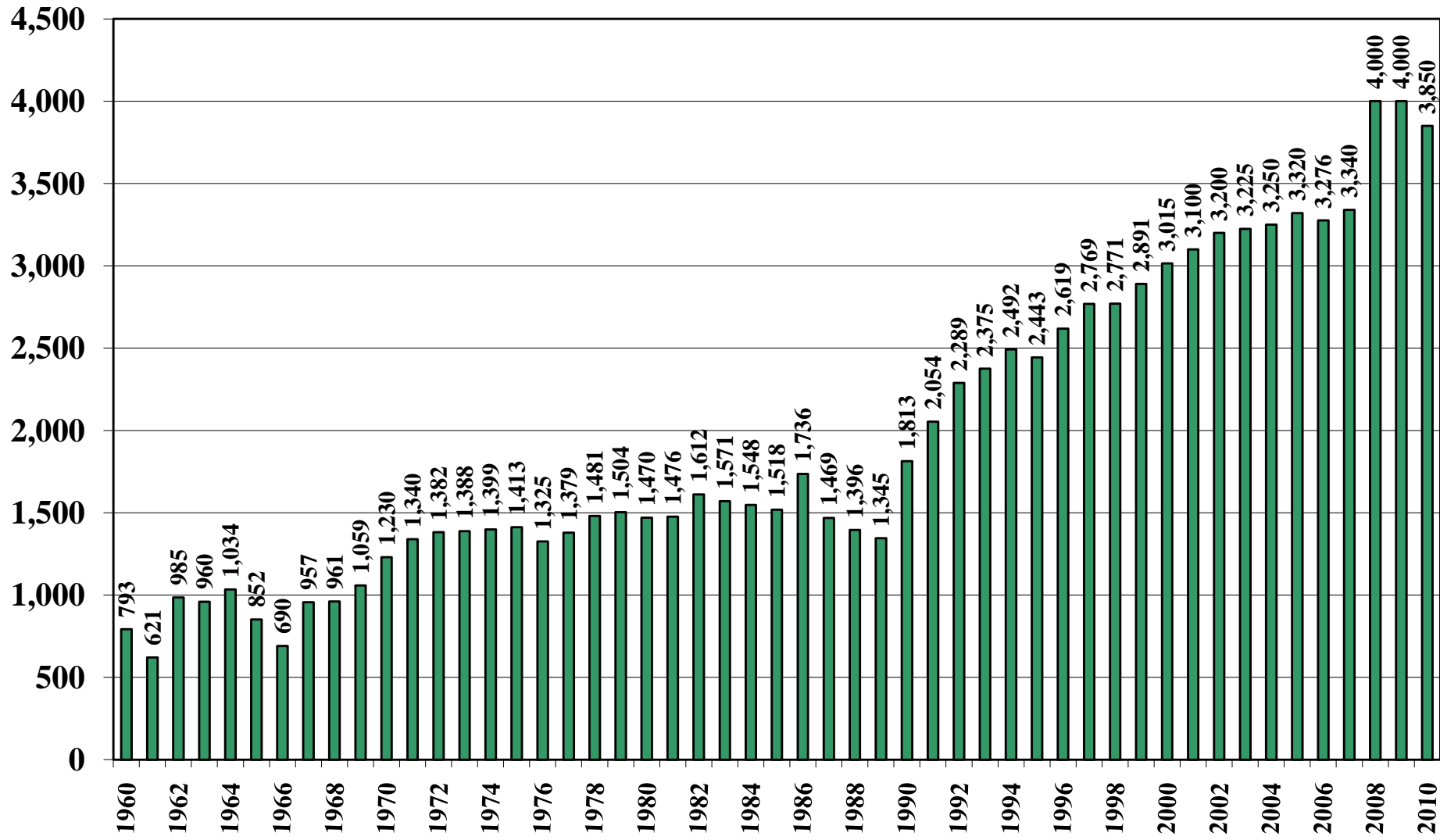
October 20, 2010

# Egypt Rice Jan-Dec Exports (1,000 Metric Tons) 1960/61 – 2010/11



Source: [USDA Foreign Agricultural Service](#)

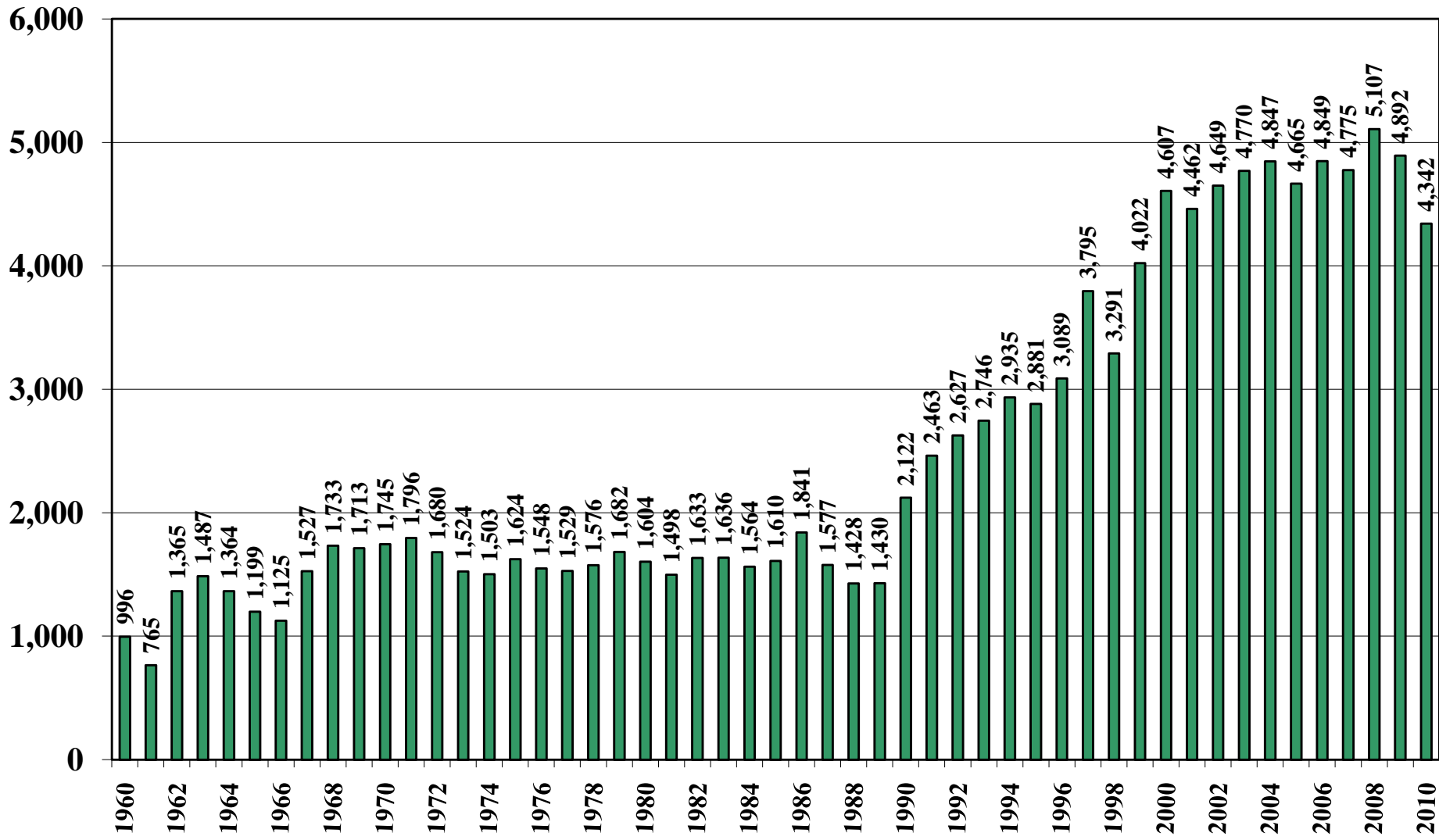
# Egypt Rice Total Domestic Consumption (1,000 Metric Tons) 1960/61 – 2010/11



Source: [USDA Foreign Agricultural Service](#)

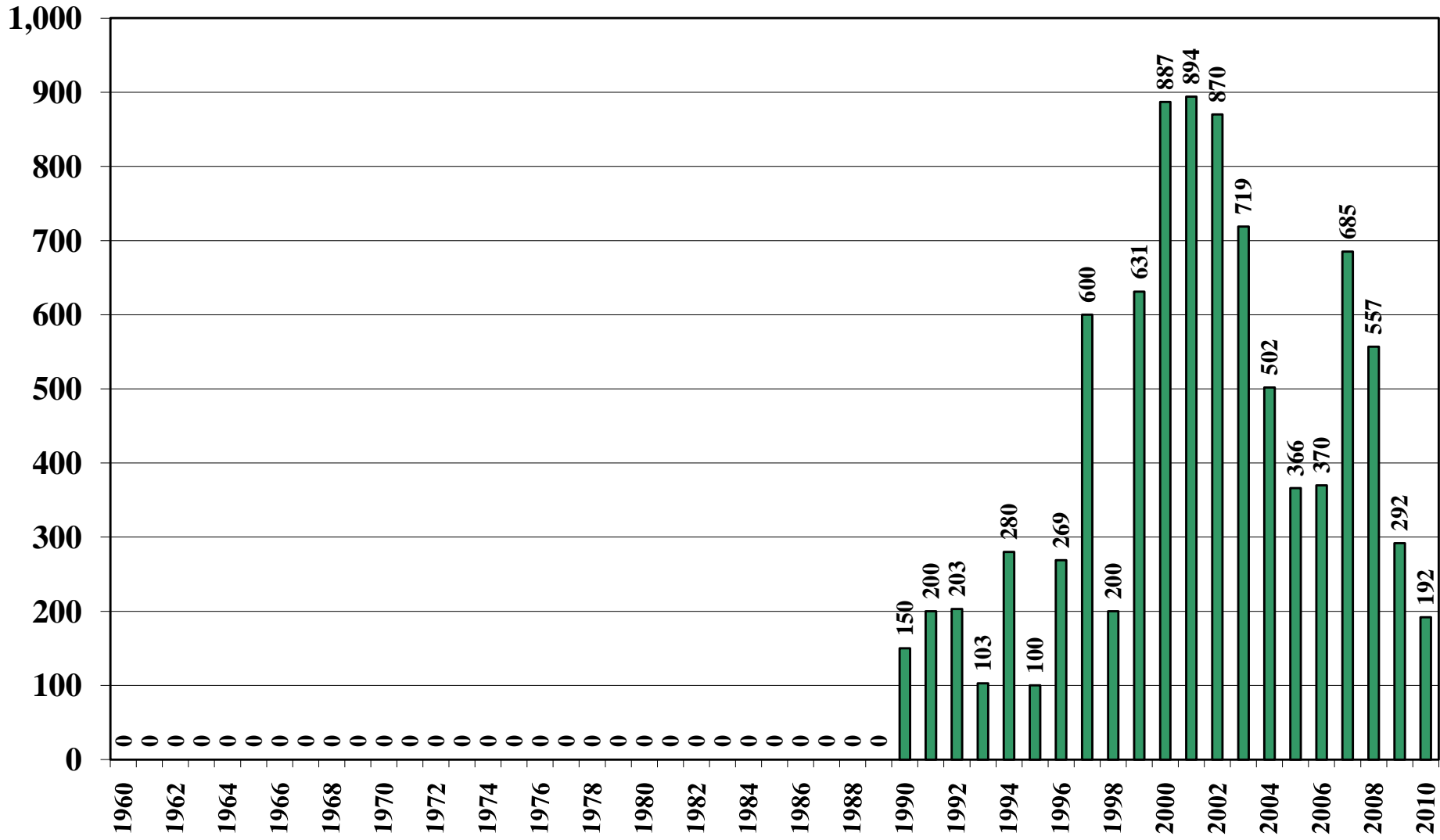
October 20, 2010

# Egypt Rice Total Distribution (1,000 Metric Tons) 1960/61 – 2010/11



Source: [USDA Foreign Agricultural Service](#)

# Egypt Rice Ending Stocks (1,000 Metric Tons) 1960/61 – 2010/11



Source: [USDA Foreign Agricultural Service](#)