

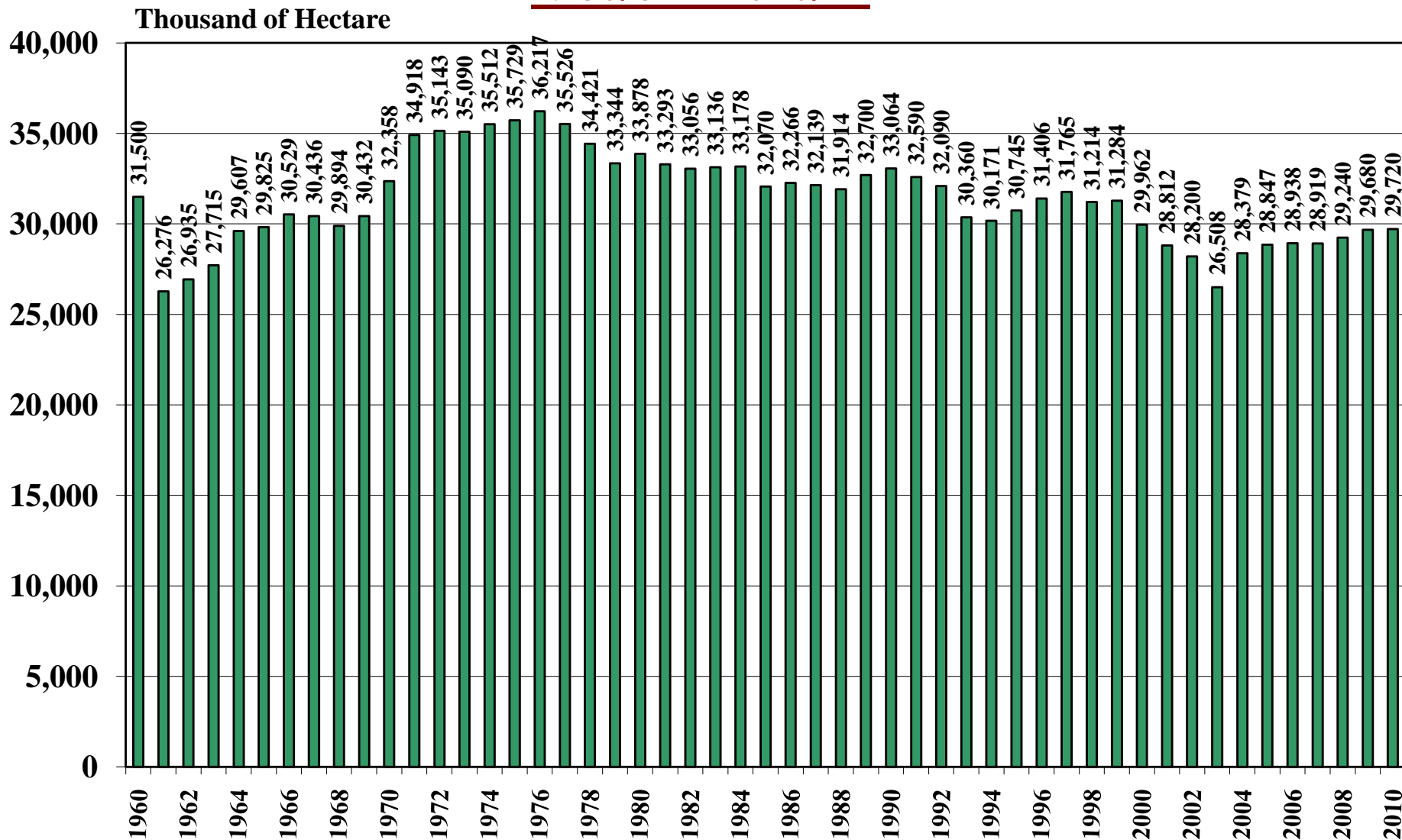
Peoples Republic of China

USDA Supply and Demand Estimates

October 29, 2010

Peoples Republic of China Rice Acreage Harvested

1960/61 – 2010/11

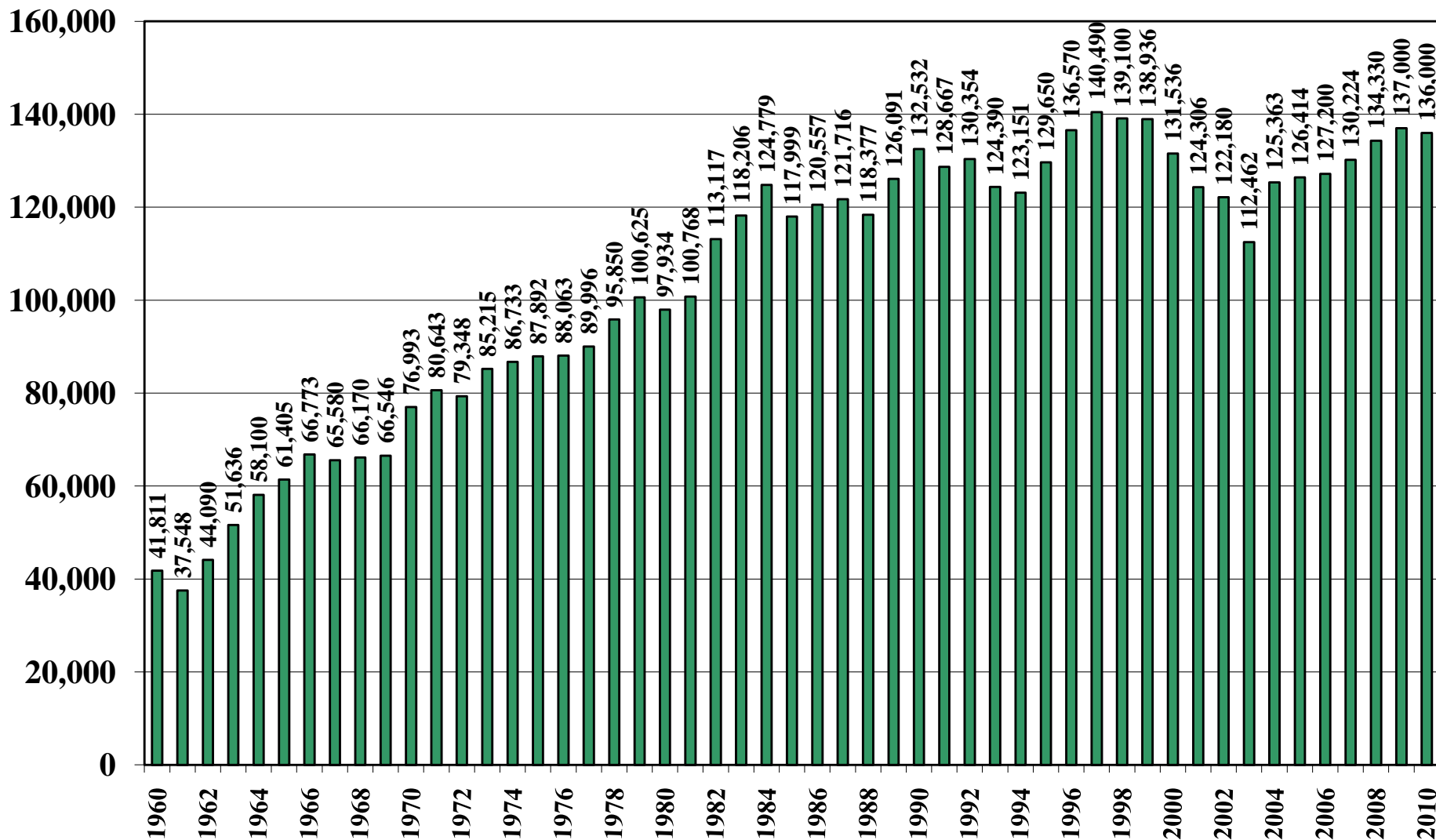


Source: [USDA Foreign Agricultural Service](#)

October 29, 2010

Peoples Republic of China Milled Production (1,000 Metric Tons)

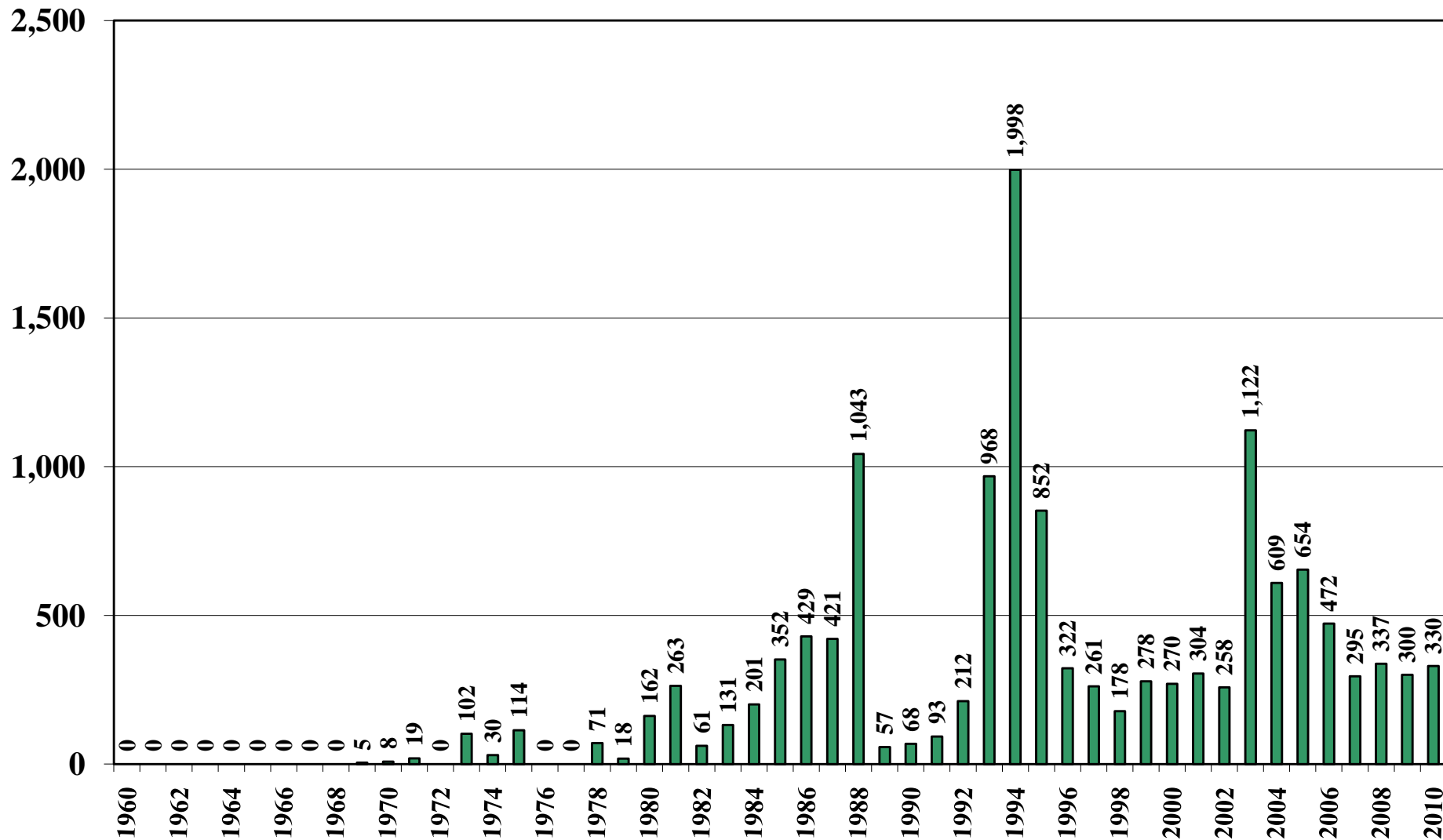
1960/61 – 2010/11



Source: [USDA Foreign Agricultural Service](#)

October 29, 2010

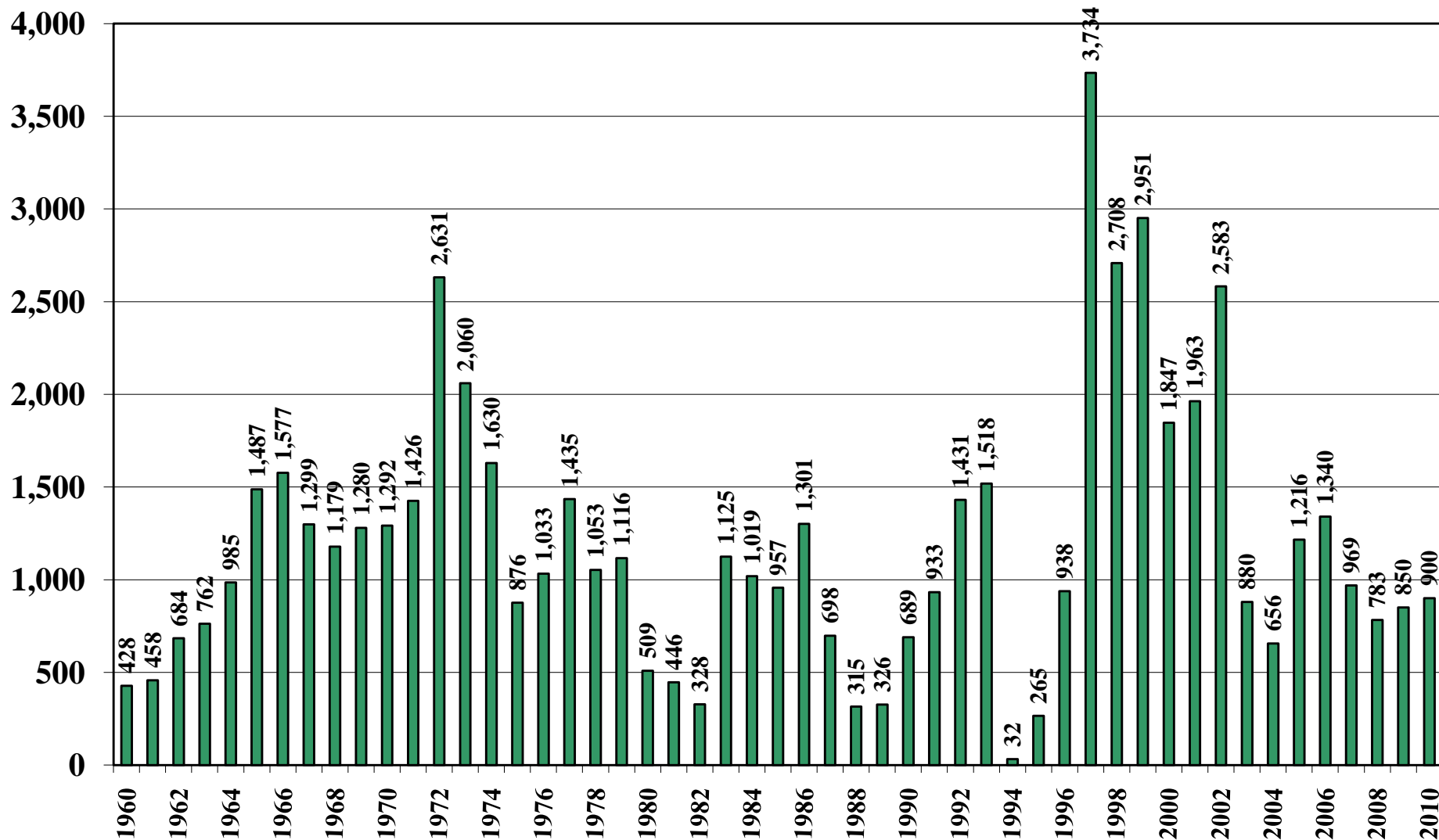
Peoples Republic of China Rice Jan-Dec Imports (1,000 Metric Tons) 1960/61 – 2010/11



Source: [USDA Foreign Agricultural Service](#)

Peoples Republic of China Rice Jan-Dec Exports (1,000 Metric Tons)

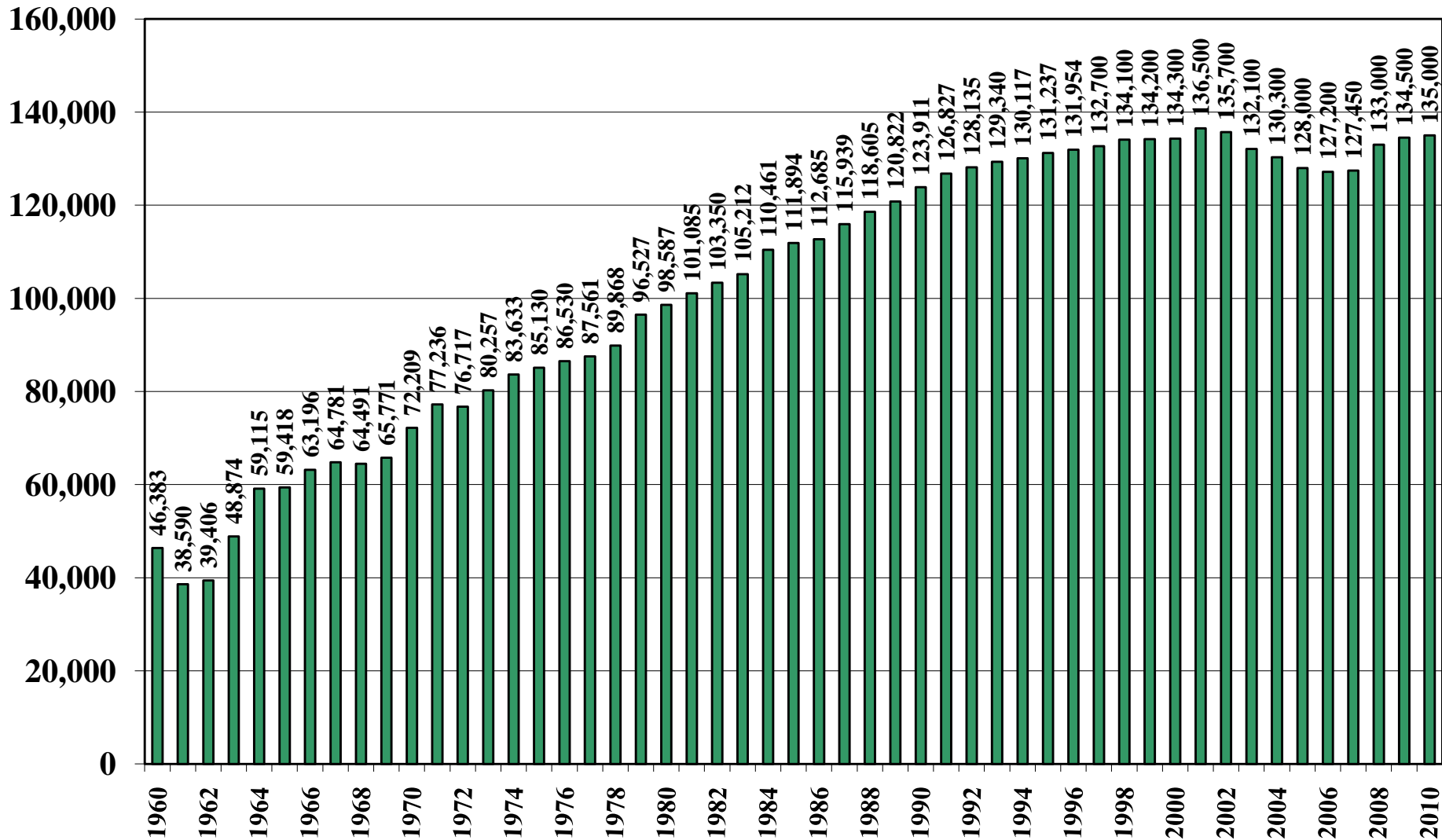
1960/61 – 2010/11



Source: [USDA Foreign Agricultural Service](#)

October 29, 2010

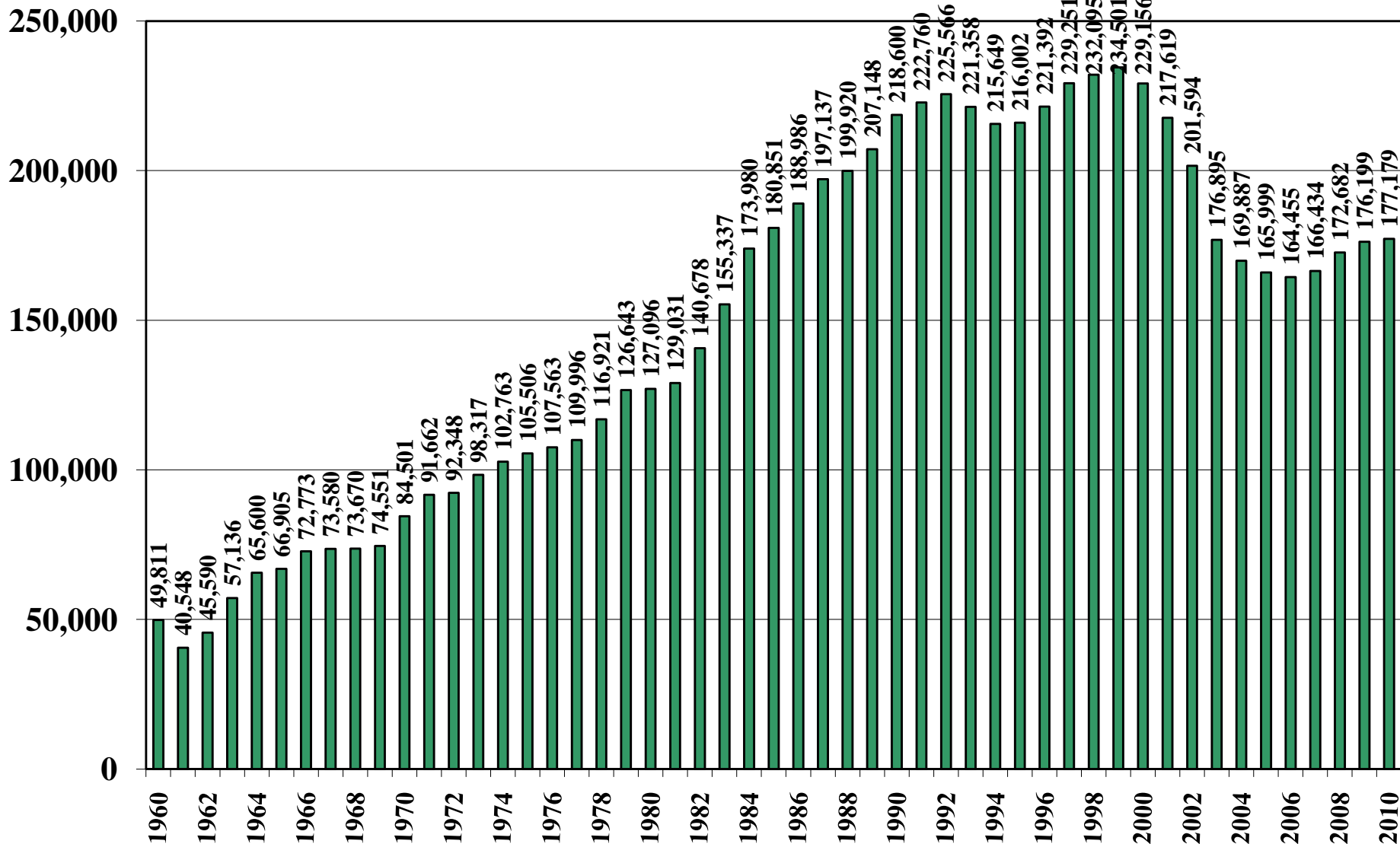
Peoples Republic of China Rice Total Domestic Consumption (1,000 Metric Tons) 1960/61 – 2010/11



Source: [USDA Foreign Agricultural Service](#)

Peoples Republic of China Rice Total Distribution (1,000 Metric Tons)

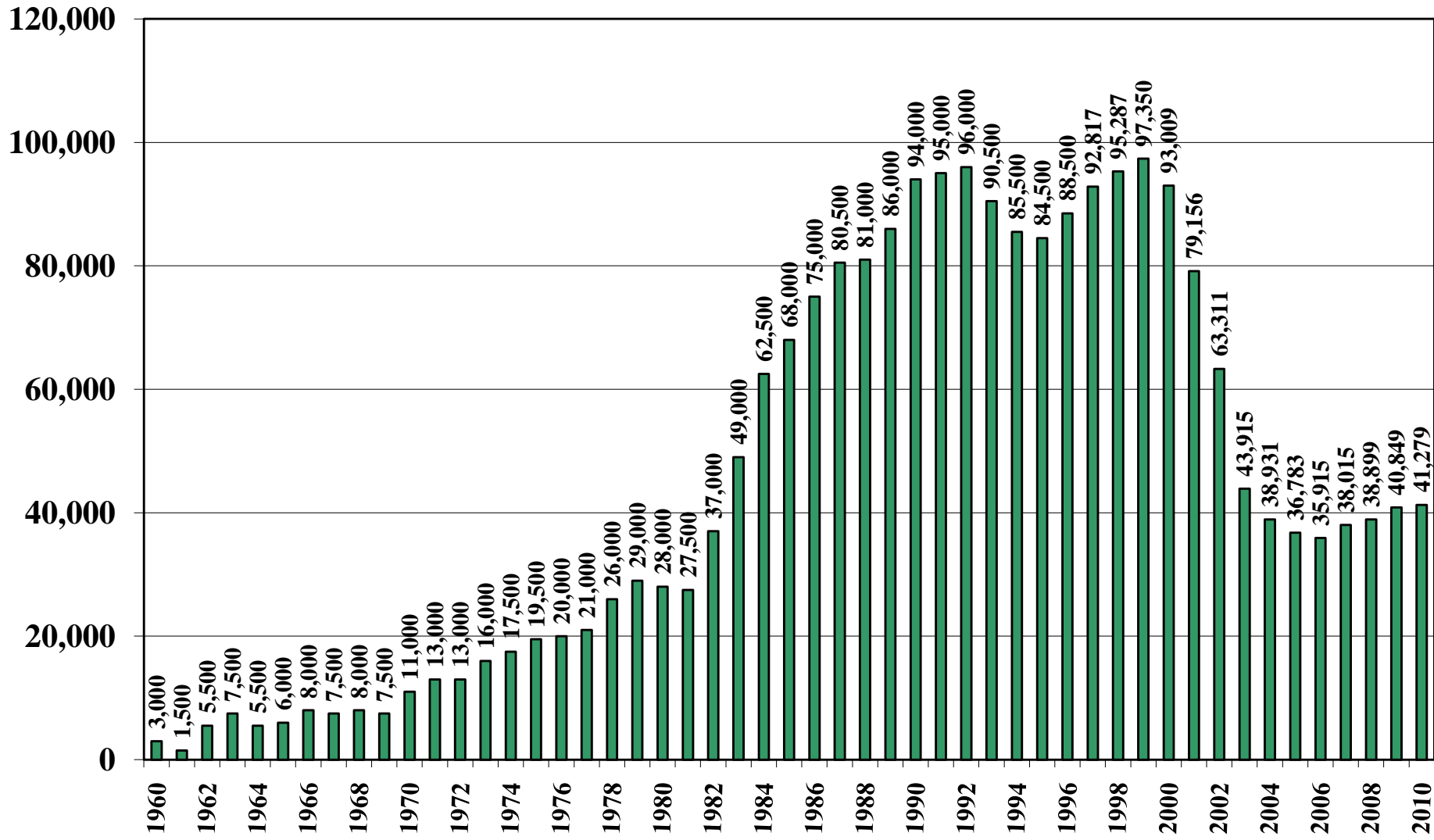
1960/61 – 2010/11



Source: [USDA Foreign Agricultural Service](#)

October 29, 2010

Peoples Republic of China Rice Ending Stocks (1,000 Metric Tons) 1960/61 – 2010/11



Source: [USDA Foreign Agricultural Service](#)

October 29, 2010